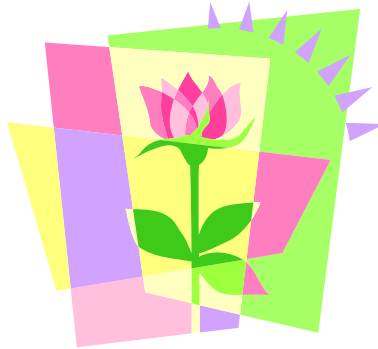


SPRING BREAK CLOSING NOTICE



Health and Counseling Service:
Closing: 4:00 pm Friday March 21, 2008
Reopening: 8:30 am Monday March 31, 2008

FROM March 22nd - 30th
FOR HEALTH EMERGENCIES CONTACT:
THE ON-DUTY RD,
CAMPUS POLICE (X5555)

OR

GO TO THE LOCAL EMERGENCY ROOM AT:

NEWTON-WELLESLEY HOSPITAL
2014 Washington Street
Newton, MA 02462
(617) 243-6193

... ..

METRO WEST MEDICAL CENTER
67 Union Street
Natick, MA 01760
(508) 650-7400