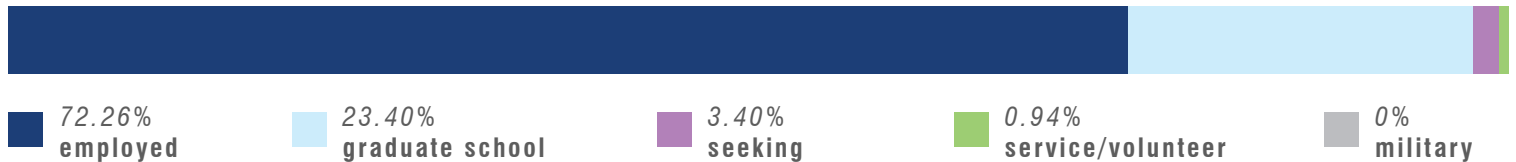
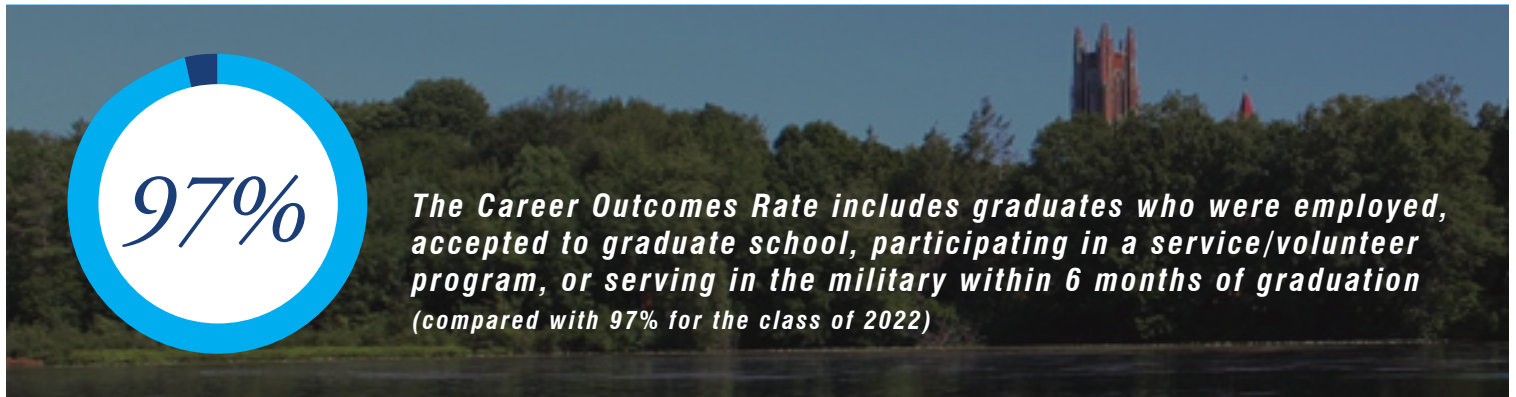


WELLESLEY COLLEGE

CLASS OF 2023

first destination survey

CAREER *outcomes rate*



TOP *employers*



TOP EMPLOYMENT *locations*



- Top Locations**
- Massachusetts (119)
 - New York (49)
 - California (27)
 - Washington, DC (23)
 - Washington (11)
 - Illinois (9)
 - Texas (8)
 - Maryland (7)
 - Pennsylvania (7)
 - Virginia (7)

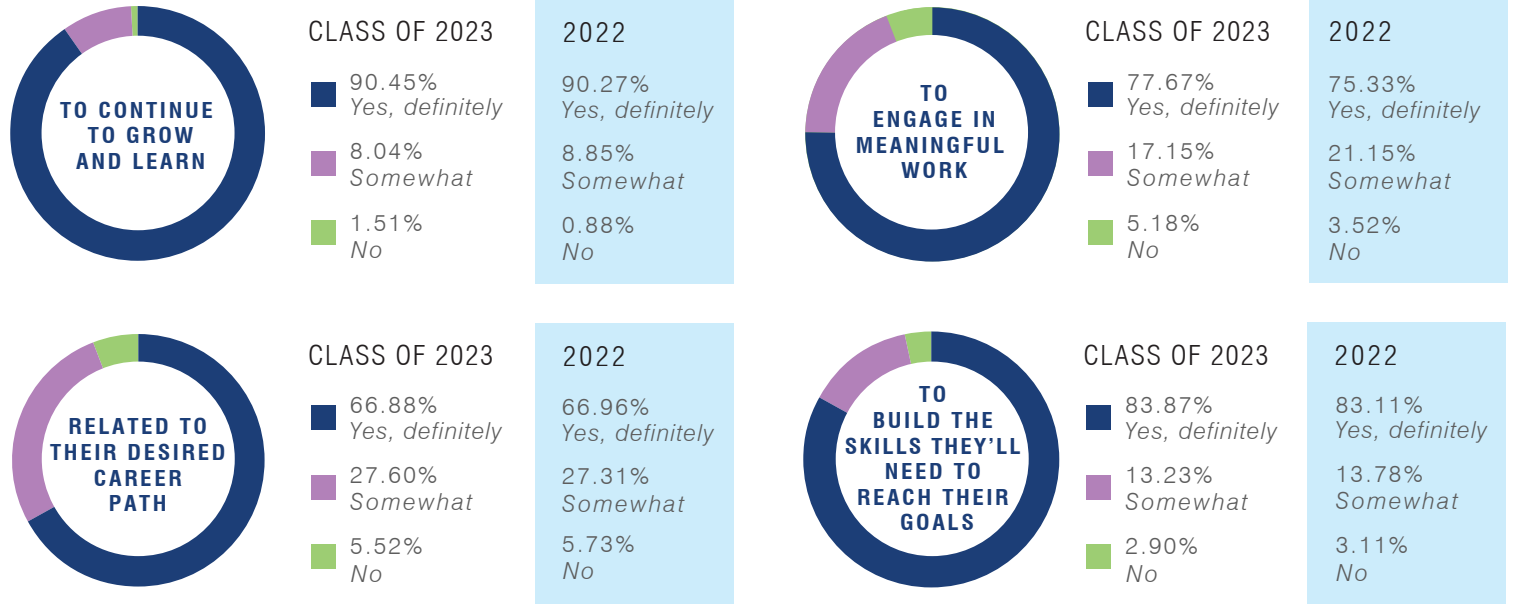
TOP EMPLOYMENT *industries*

- Consulting / Business / Finance (23.38%)
- Healthcare, Life Sciences (18.31%)
- Education (16.62%)
- Internet & Software, Technology / Engineering (11.27%)
- Nonprofit, NGO (10.42%)
- Retail, Hospitality, Tourism (4.51%)
- Legal (3.94%)
- Environmental / Renewable Energy (3.38%)

Location and industry data includes students with full time positions.

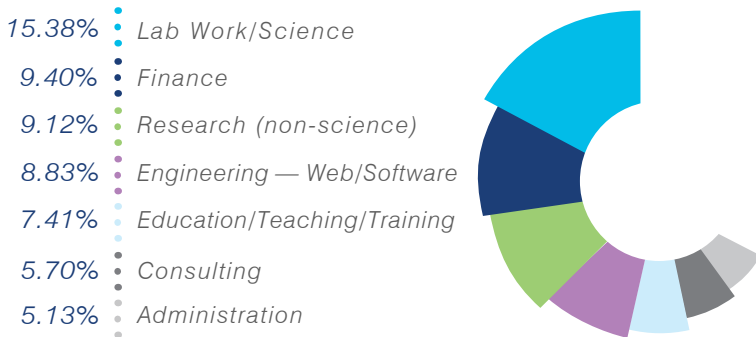
QUALITY OF *outcomes*

STUDENTS DESCRIBE THEIR POST-GRADUATE PLAN AS AN OPPORTUNITY...



Quality of outcomes data includes students reporting employment, graduate school, service/volunteer, and military.

TOP *job functions*

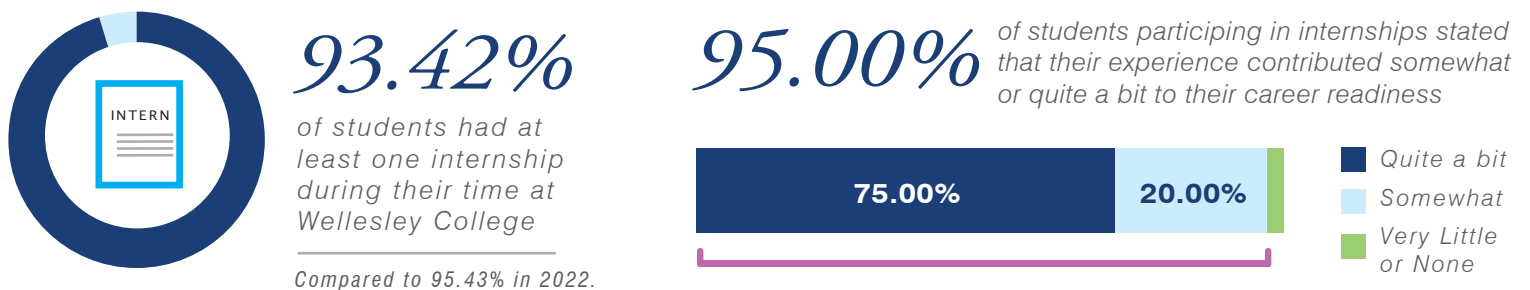


Job function data includes students with full time positions.

TOP *internship employers*



VALUE OF *internships*



TOP *graduate schools*



Yale



FELLOWSHIP *awards*

166

awards to members of the Class of 2023 (includes Wellesley College Graduate Fellowships, Wellesley funded awards, & external fellowship awards)

Beckman Scholars Program (1)

Benjamin A. Gilman International Scholarship (13)

Betsy Wood Knapp '64 Thesis Fellowship in the Social Sciences (2)

Boren Scholarship (1)

Brooke Owens Fellowship (1)

Caltech WAVE Fellows Program (1)

Case Fellowship (2)

Clare Booth Luce Graduate Fellowship (2)

Coro Center for Civic Leadership/Public Affairs Fellowship (1)

Critical Language Scholarship (4)

Davis Projects for Peace (2)

French Government English Teaching Assistantships (TAPIF) (1)

Fulbright US Student Program (3)

GEM Fellowship (3)

Goldwater Scholarship (1)

Govern for America (1)

Harvard Center for Arabic Study Abroad Fellowship (1)

Jerome A. Schiff Fellowship (16)

Knapp Social Science Fellowship (8)

Mayling Soong Fellowships (1)

McNair Scholars Program (21)

MedServe Fellowship (1)

Mellon Mays Undergraduate Fellowship (9)

National Institutes of Health Postbaccalaureate Intramural Research Training Award (1)

National Science Foundation Graduate Research Fellowship (4)

National Theater Institute Fellowship (1)

Northwestern University Shinae Chun Fellowship (1)

Pamela Daniels '59 Fellowship (6)

Projects for Peace (1)

Rhodes Scholarship (Pakistan) (1)

Samuel and Hilda Levitt Fellowship (8)

Student Library Research Award (3)

Susan Rappaport Knafel '52 Scholarship for Foreign Study (2)

Susan Rappaport Knafel '52 Traveling Fellowship (1)

Thomas J. Watson Fellowship (3)

Thomas R. Pickering Foreign Affairs Graduate Fellowship (2)

Truman Scholarship (1)

VELD Fellowship (1)

Wellesley Clare Booth Luce Scholar (11)

Wellesley College Graduate Fellowships (17)

Wellesley College Student Library Research Award (4)

Wellesley-Yenching Graduate Fellowship (2)

CLASS OF 2023 *stories*



The start of medical school has been so exciting— moving to a brand-new city, meeting lots of my supportive classmates, and receiving my white coat! The first couple weeks have been academically challenging, but every time I enter the anatomy lab, I am reminded of why I want to be a doctor.

Fee Puertas '23

Jacobs School of Medicine & Biomedical Sciences at University of Buffalo



After I attend graduate school at Columbia SIPA and obtain a Master's in Public Administration, I will start my career in diplomacy and spend a minimum of 5 years as a Foreign Service Officer. I look forward to serving in Washington, DC, and at a U.S. embassy, consulate, or diplomatic mission around the globe!

Michelle Lee '23

Thomas R. Pickering Foreign Affairs Graduate Fellowship Winner

The Class of 2023 First Destination Survey measured student outcomes within 6 months of graduation, with an 90% knowledge rate. Knowledge rate data is the collection of information from NACE defined reputable sources (i.e. LinkedIn, Employers).

