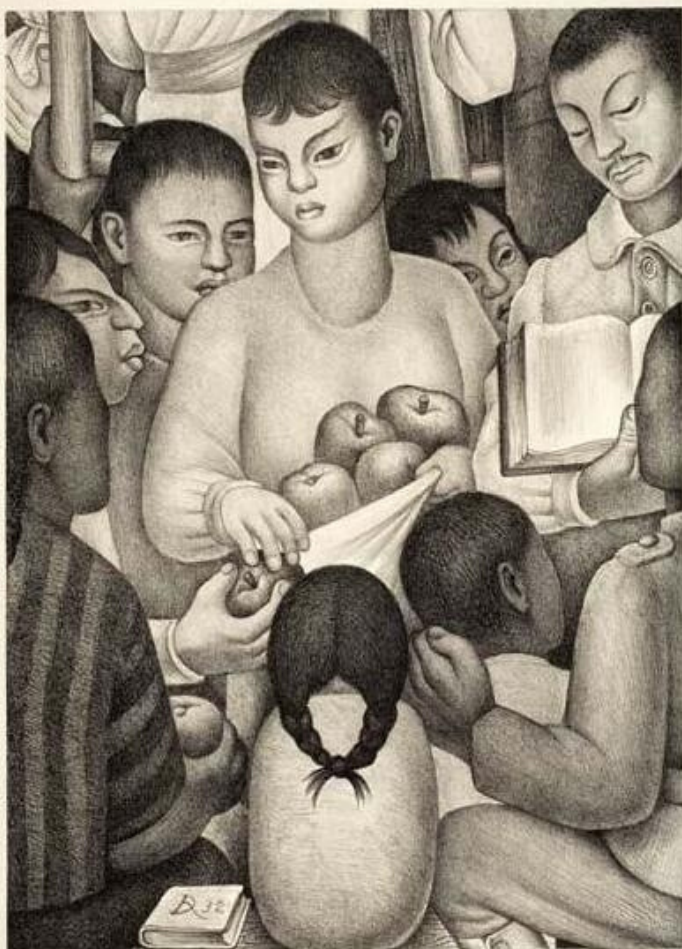


FAMILY DAY

El día de la familia

TREASURE HUNT

La búsqueda
de tesoro



the Davis.

DAVIS MUSEUM AT WELLESLEY COLLEGE

**Welcome to
Family Day**

at the Davis!



**¡Bienvenidos a la
día de la familia**

en el Davis!



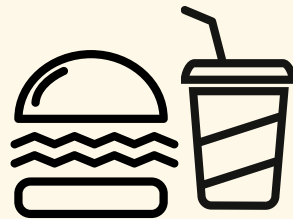
Today we'll explore Latin American art through collage, paintings, prints, and more!

Follow the clues to discover all kinds of works, then record details about your discoveries in your booklet as you go.

When you're ready to start your treasure hunt through the Davis, grab a pencil and an adult, and head into the galleries!

Need help with a clue? Remember to look for the labels next to each object to learn more about them. Really stumped? Ask a Student Visitor Assistant in **RED** or a guard for help!

*Please remember to touch with your eyes and not with your hands. This will protect our art so that everyone can enjoy it for a long time. Also, please be sure to leave food, drinks, and backpacks in the lobby!



LEVEL 4

PORTRAIT OF A YOUNG WOMAN

Using the stairs or the elevator, begin your journey by finding this portrait of a young woman on Level Four.

What do you notice about the girl's clothing?

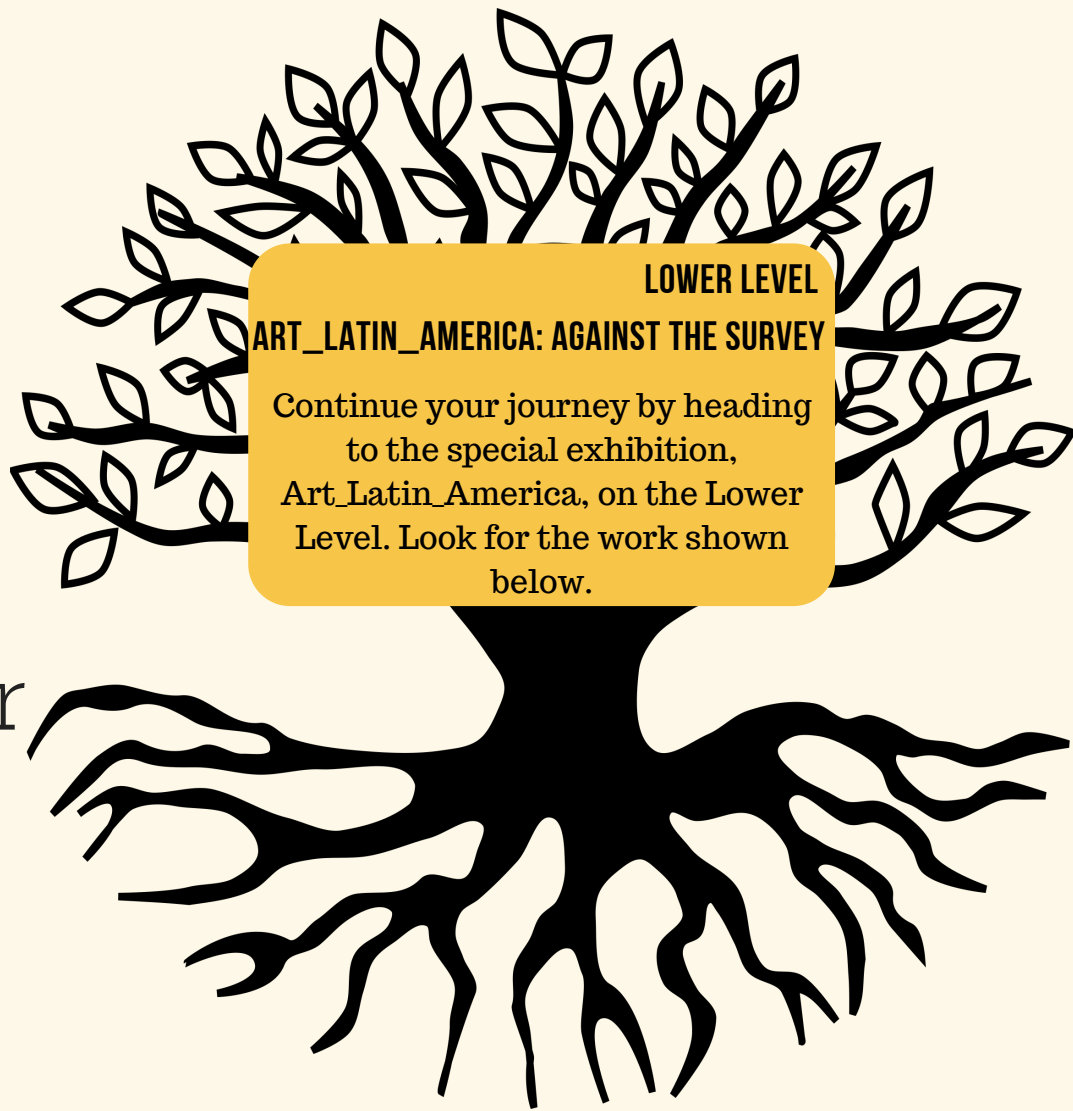


What do you think her clothing tells us about her?



Finding Your Roots

Encontrar
Sus
Raíces



LOWER LEVEL

ART_LATIN_AMERICA: AGAINST THE SURVEY

Continue your journey by heading to the special exhibition, Art_Latin_America, on the Lower Level. Look for the work shown below.

**Take a
closer look!**

What do you think
the clothing
reveals about
this person?

Have you seen
these accessories
and clothing
before?





SEARCHING FOR THE PAST

Today, many people get tested to see where their ancestors (antepasados) once lived in the world.



THE ARTIST'S ROOTS

Here, the artist shows his European, African, and Asian roots through the accessories and clothing he wears in each self-portrait.

WHAT DOES CLOTHING SAY ABOUT YOU?

Draw a picture of yourself wearing an outfit that represents you and your family.

GESTURE AND GEOMETRY

Find the work below in the Gesture and Geometry section of the Art_Latin_America Special Exhibition.



Why do you think the artist drew the map this way?

Here, the artist created a map of South America so the North (**Norte**) is placed on the bottom and South (**Sur**) is placed on the top.

Can you find...

A bird? _____

A snake? _____

A fish? _____

A boat? _____

A sun? _____

A person? _____