

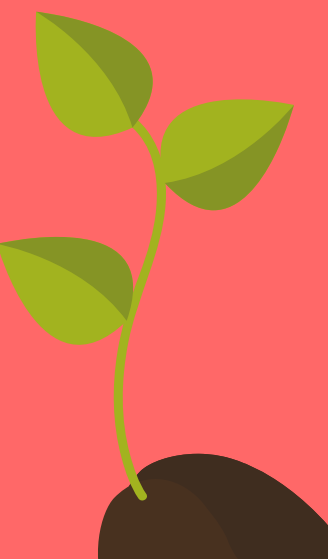
# Resource Guide for Wellesley Students in Immigrant Communities



This is a community-based project created by Raíz, a student organization at Wellesley that advocates for immigrant and refugee communities. We hope this guide will be of support to you. Please be respectful of the various identities and privileges that exist within immigrant communities and those who have paved the way before us.



The following document is a PDF version of the Resource Guide created by Raíz in Spring 2021. A separate version in Google Doc format exists so anyone who is a part of the Wellesley Community can contribute. You can access the document [here](#).



## Breakdown

### Emergency Resources

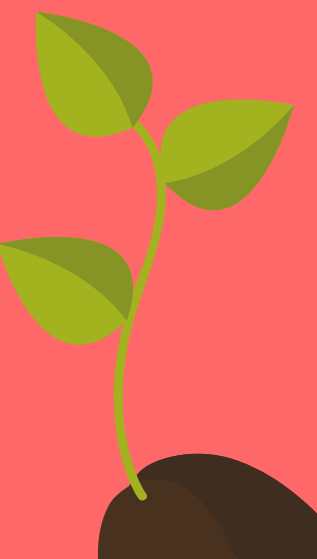
### Wellesley On-Campus Resources

- Student Organizations
- Finance
- Advisors
- General Services
- Academic-Related Resources

### Wellesley Off-Campus Resources

- Organizations in Greater Boston Area
- Organizations in Major Metropolitan Areas
- Mental Health
- Legal Aid
- Scholarships & Fellowships

### General Resources






# Emergency Resources

[Know Your Rights \(English and multiple languages\)](#)

- Different Scenarios (law enforcement, lawyer, detainment, home invasion)
- Your rights within each situation, what to expect, etc.

[Emergency Preparedness for Immigrant Families: A 50 State Resource](#)

- Select national and state-by-state resources to guide immigrants, legal service providers, and advocates as they assist families at risk of detention or deportation in planning to protect their families and property
  - Includes Consular Hotlines
- 



# Emergency Resources

## [Help for People Facing Deportation or in Detention](#)

- Help locating a family member in detention (also if ICE is withholding information)
- Description of the deportation process and removal proceedings, leveraging consultant
- Finding a lawyer, bond eligibility, contacting officials

## [ICE Detainee Locator System](#)

- Use this page to locate a detainee who is currently in ICE custody



- Raíz
  - A student-run group focused on organizing students to advocate for the rights and well-being of immigrant and refugee communities
- International Student Union
  - International Students at Wellesley fighting to hold Wellesley accountable to its International Students
- Slater International Center
  - Center on campus dedicated for international activities and a space for anyone interested in increasing intercultural understanding
    - On/Off Campus Employment
    - Tax Information

# W Wellesley

## On-Campus

## Resources

### Student Organizations



- SILO (Students with Incarcerated Loved Ones)
  - SILO is a student-run support group for current Wellesley students who have at least one loved one (generally an immediate family member or partner) who is currently or formerly incarcerated and/or who are formerly incarcerated themselves. They define incarceration to include any time someone is held by the state against their will, including imprisonment, detention, and state mental hospitals, for enough time that their family is significantly impacted.
  - Contact Liz Nicholson at [enichol5@wellesley.edu](mailto:enichol5@wellesley.edu)

# Wellesley On-Campus Resources Student Organizations



- Financing your Education
  - [Student Financial Services \(SFS\)](#)
    - [SFS Contact Information](#)
  - [Loans](#)
  - [2021-2022 Wellesley College Emergency Funding](#)
    - These funds will be used to meet the critical needs of students that arise as the pandemic continues. Students can request funds in grants of between \$50 to \$200 to meet needs such as for food, housing, technology, health care and child care expenses, that have resulted from the disruption caused by the novel coronavirus pandemic by using this form. If additional funds are needed, the committee will take your situation into consideration.

Wellesley  
On-Campus  
Resources  
Finances





- Student Employment
  - Handshake
- Student Aid Society (WSAS)
  - Provide funds for Wellesley students for tuition loans and grants, emergency funds, textbooks, short-term no-interest loans
  - Questions? Contact Catherine Kefalas '89 (ckefalas@wellesley.edu)

# W Wellesley On-Campus Resources Finances



- Monarch Fund
  - Housed under the Student Aid Society (SAS), the Monarch Fund is directed to benefiting Wellesley students and students' families who are impacted by current immigration policies during their time in college, and it seeks to help cover the related costs that aren't covered by financial aid. This includes but is not limited to legal assistance, DACA or TPS renewal fees, books and school supplies, medical expenses, emergencies (such as unexpected travel expenses), and costs of staying on the campus or locally during college breaks due to an inability to return home. Students are eligible regardless of financial aid.

Wellesley  
On-Campus  
Resources  
Finances



- Dean Rebecca Garcia
  - Dean of Class of 2023 (M–Z), WellesleyPlus and WellesleyFirst  
(rgarcia2@wellesley.edu)
- DeanMared Alicea–Westort
  - Advisor to Latinx Students, Assistant Dean of Intercultural Education  
(maliceaw@wellesley.edu)
- Dean Ines Maturana Sendoya
  - Associate Dean of Students for Inclusion and Engagement  
(imaturan@wellesley.edu)
- Tana D. Ruegamer
  - Director and International Student and Scholar Advisor  
(slatercenter@wellesley.edu)

# W Wellesley

## On-Campus Resources

Advisors (Specific to this Community)



- Wellesley Office of International Study (OIS)
  - Who should I contact to see if I am eligible for study abroad?
  - What opportunities are available if I wish to study at another college in the U.S.?
- Career Education
  - Resources for Undocumented Students and Students Qualified for DACA
    - Offers link to on-campus and off-campus resources that can help students navigate their career paths
  - Resources for Undocumented Immigrants/DACA Status Students and Alumnae
    - Resources for students interested in the health field (includes a list of medical schools that accept DACA/Undocumented student applicants)

Wellesley  
On-Campus  
Resources  
General Services



- [Stone Center Counseling Services](#)
  - [Services](#)
  - [Groups and Workshops](#)
- [Wellesley College Working Group On Immigration Policy](#)
  - Committee made up of students, faculty, and staff to help guide the college in response to changing immigration policies. The website also includes immigration news updates.

# Wellesley

## On-Campus Resources

### General Services

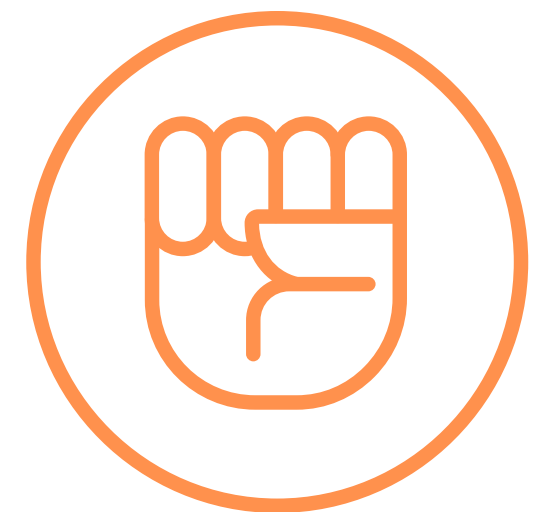


- [Textbook Google Drive Folder](#)
  - A drive with copies of textbook pdfs made by a previous Wellesley Student. Includes books for BISC, NEURO, ECON, and more!

# Wellesley On-Campus Resources

Academic-Related  
Resources





# Wellesley Off-Campus Resources

Organizations in the  
Greater Boston area

- [Boston Immigrant Justice Accompaniment Network](#)
  - Resources for:
    - Know your rights when interacting with ICE, Supporting a loved one in ICE jail, Resources for MA-Area ICE Jails, Finding an Immigration Lawyer, About Immigration Bond, About the Asylum Process, Post-Detention Resources, Post-Deportation Resources
- [COVID-19 Resources-For Residents Regardless of Status \(Massachusetts-based\)](#)
  - Health care and health benefits Resources for Immigrants and Refugees
  - Resources for Workers
- [Legal Services and Contact Information](#)
  - Immigration Legal Services Directory for Massachusetts





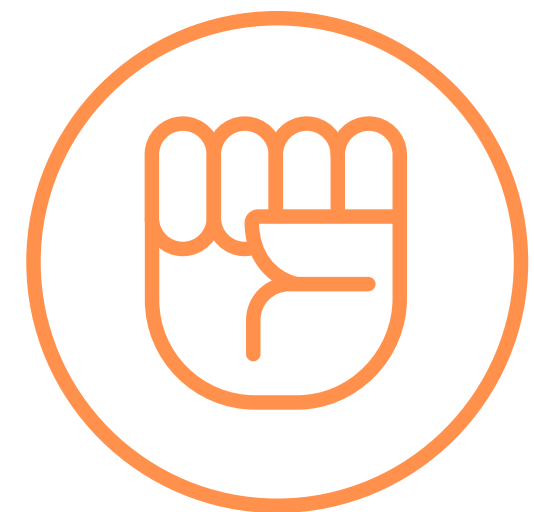
# Wellesley Off-Campus Resources

Organizations in Major  
Metropolitan areas

- Austin, Texas
  - Casa Marianella
    - Provides newly arrived immigrants with shelter
  - RAICES
    - Offers free and low cost legal assistance
- California
  - California Rapid Response Hotlines
    - Hotlines if you need assistance during an immigration raid and use the associated websites for information inquiries
  - Legal Services and Contact Information
    - Legal services directory for California





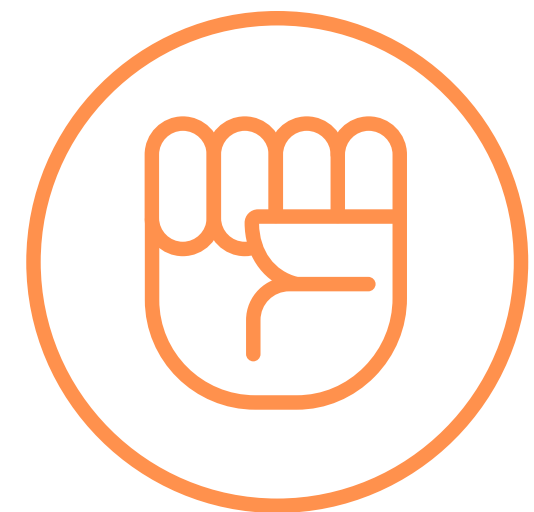


# Wellesley Off-Campus Resources

Organizations in Major  
Metropolitan areas

- Tucson, Arizona
  - [Mariposas Sin Fronteras](#)
    - Supports LGBTQ people currently detained in Eloy and Florence
  - [Legal Services and Contact Information](#)
    - Legal services directory for Arizona
- Chicago, Il
  - [The Coalition for Immigrant Mental Health](#)
    - Collaborative community based and research informed initiative that is a partnership between immigrants regardless of status, mental health practitioners, community organizers, researchers, and allies
  - [Legal Services and Contact Information](#)
    - Legal services directory for Illinois





# Wellesley Off-Campus Resources

Organizations in Major  
Metropolitan areas

- Baltimore, MD
  - [Immigrant Resources in Baltimore](#)
    - Focuses on homelessness, with links to healthcare, support groups, knowing your rights (spanish and english), and legal aid
  - [Maryland Resources for Refugees, Asylees, Asylum-Seekers, and Immigrants](#)
    - Resources for the Greater Baltimore Area, with links to legal services, medical (physical and mental/behavioral), education and more



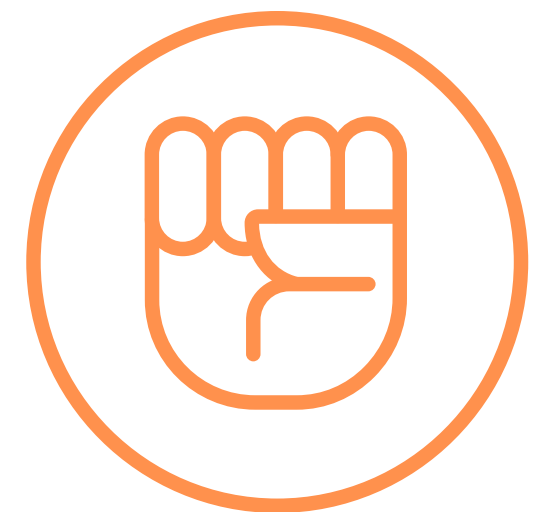


# Wellesley Off-Campus Resources

Organizations in Major  
Metropolitan areas

- New York City, NY
  - [NYC Council](#)
    - Resources for immigrant communities in NYC: DACA, Education, Health Care, Child Care, Emergency food and shelter, Public Safety, Legal Help, and more
  - [COVID-19 Resources and Info for all residents regardless of status](#)
  - [Free Safe Immigration Legal Help for NY residents](#)
  - [More Legal Services and Contact Information](#)
- More Than One Major Metropolitan Area
  - [Black Alliance for Immigrant Justice](#)
    - Educates and engages African American and black immigrant communities to organize and advocate for racial, social and economic justice

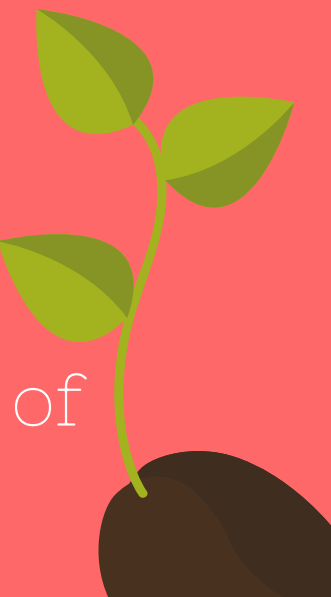




# Wellesley Off-Campus Resources

Mental Health  
Resources

- Immigrants Rising Mental Health Connector
  - Immigrants Rising's Mental Health Connector provides undocumented young people with psychological support, allowing you to access your strengths and resiliency in order to achieve your personal goals and healing.
- Undocublack Ayanda
  - Ayanda Hand in Hand aims to be a safe intimate space, physically and online, for members of the UndocuBlack Network, aged 18 and above, to connect and feel supported.
- Black Mental Wellness
  - Black Mental Wellness has gathered evidence-based information and resources from a Black perspective, to highlight and increase the diversity of professionals, and decrease the stigma of mental health.





# Wellesley Off-Campus Resources

Mental Health  
Resources

- [Therapy for Latinx](#)
  - Therapy for Latinx has compiled a directory of mental health service providers for the Latinx community, as well as book recommendations, crisis hotlines, national resources, etc.
- [National Queer and Trans Therapists of Color Network](#)
  - You can search through a directory of therapists by state/region. Once you find a therapist in your area click on their name to be redirected to another website where you can book an appointment



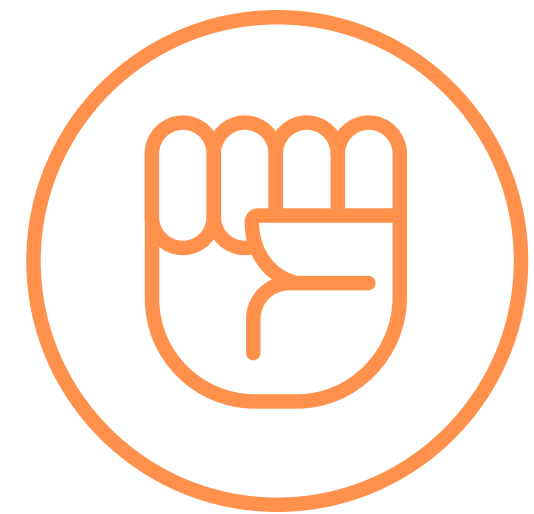


# Wellesley Off-Campus Resources

## Mental Health Resources

- [The National Asian American Pacific Islander Mental Health Association](#)
  - The National Asian American Pacific Islander Mental Health Association has prepared a resource list to meet the mental health needs of their community, which includes state-level programs when more AAPI-specific information is unavailable for that area.
- [The South Asian Mental Health Initiative & Network](#)
  - The South Asian Mental Health Initiative & Network has gathered a variety of materials for mental health, including a provider network, a helpline, and a support group for suicide loss survivors.





# Wellesley Off-Campus Resources

Mental Health  
Resources

- [Arab-American Family Support Center](#)
  - Host work groups to destigmatizing mental health and increase access to mental health services





# Wellesley Off-Campus Resources

Legal Aid

- [National Immigration Legal Services Directory](#)
  - Use the directory to search for immigration legal services providers by state, county, or detention facility. Only nonprofit organizations that provide free or low-cost immigration legal services are included.
- [National Directory of Pro-Bono Legal Services](#)
  - List of Pro Bono Legal Service Providers



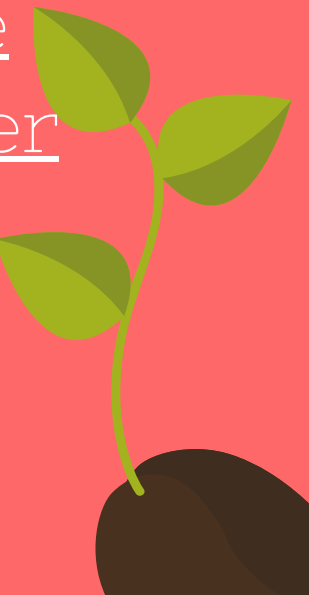


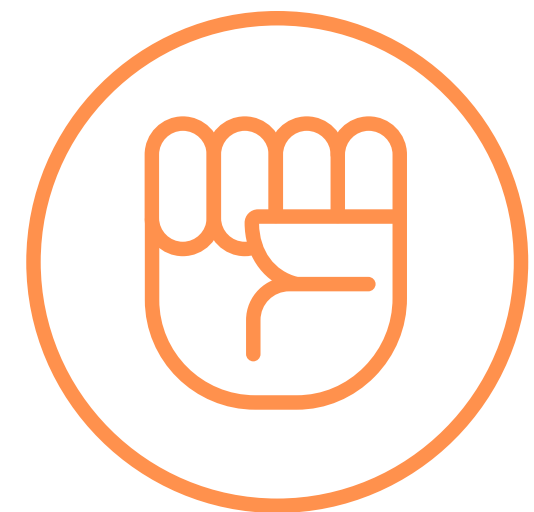


# Wellesley Off-Campus Resources

## Internship Resources

- Opportunities at organizations related to immigrant advocacy
  - [ACLU](#)
  - [Migration Policy Institute](#)
  - [RAICES](#)
  - [Asian Americans Advancing Justice- LA](#)
- Paid Opportunities available to those under immigrant status (DACA, undocumented, international, etc.)
  - [UCLA Public Health Scholars Training Program](#)
  - [The Marcus Foster Education Institute](#)
  - [Health Career Connection Paid Summer Internship](#)





# Wellesley Off-Campus Resources

Scholarships &  
Fellowships

- Undergrad Scholarships
  - [Scholarships Open to Undocumented Students and Fee Waivers](#)
  - [Immigrant Rising's List of Undergraduate Scholarships](#)
    - Scholarships for undergraduate studies that don't require proof of citizenship or legal permanent residency
- Graduate Scholarships
  - [MyUndocumentedLife-Grad School Funding](#)
    - Up-to-date list of graduate school funding options for undocumented student
- Fellowships
  - [RESULTS-Organizing and Advocacy Fellowship](#)



- Terms to Know
  - Directory of terms, processes and programs definitions for those applying to colleges and universities like applications, financial aid, sanctuary campuses, etc. (specifically undocumented students)
- Money
  - Undocuhustle
    - Explore entrepreneurship opportunities and starting businesses
  - Taxes and Individual Taxpayer Identification Number (ITIN)
    - Breakdown on how to do your taxes
  - Credit, Financials, Banking, Lending/Loans, etc.
    - How to build your Credit, Take out Loans, etc.

# General Resources



- Work
  - [Upwardly Global](#)
    - This organization offers resources to job seekers, employers and supporters to help immigrants translate their education, skills and professional experience abroad to integrate into the U.S. workforce.
  - [National Immigration Law Center's Workers' Rights Section](#)
    - workers' right, know-your-rights trainings, policy analysis, and response toolkits
  - [Massachusetts Covid-19 Relief for Undocumented Immigrants](#)
    - Scroll down to access links to other Emergency Relief Funds for Massachusetts' workers (separated by language)

# General Resources



- [More General Resources \(Separate COVID-19 Guide By State\)](#)
  - Guides to resources for DACA renewal, education, mental health and other health services, help for those facing deportation/detention, etc.
- [Resources for Undocumented Immigrants and their Families During COVID-19](#)
- [Covid-19 Fact Sheet in 40+ Languages](#)
- [Guide for Undocumented High School and College Students](#)
- [Blog post on how to build your Mentorship Network](#)

# General Resources





THANK  
YOU

